



## Color that Lasts

Have you ever seen a wood composite display sitting outside at your local lumber dealer? If so, you know they look rather gray and weathered. That's because most wood composites will lose their original color within the first 12 weeks exposed to the outdoors.

EnduraBoard colors are blended with a natural mineral and HDPE. That means EnduraBoard decking will never leech it's color like a wood composite or be affected by moisture related issues. EnduraBoard is also stain resistant. Barbeque, rotting leaves or grease can simply be washed away with soap or even bleach.

From the hot humid coastlines of the Southeast to the wet Pacific Northwest and everywhere in-between, EnduraBoard was designed to last where many other composites have failed.

Available in four attractive colors with a natural wood grain look on each side.



## Railing System

One of the many advantages of EnduraBoard is it's adaptability. Nowhere is this more evident than in our railing system. Unlike many other composites, EnduraBoard railings are comprised of the same color and quality material as the decking.









Spindles, posts and rails are solid, and will match the color and texture of the EnduraBoard decking they are installed on. Posts and spindles have an attractive line pattern engraved

on all four sides to give it a truly unique look from all angles. Railing system available in all four colors.



## Profiles

Product	Size (Actual)	Lengths	Profile
<i>Deck Board</i>	5/4" x 6" (1" x 5 1/2")	12' 16' 20'	
<i>Hand Rail</i>	2" x 6" (1 1/2" x 5 1/2")	12' 16'	
<i>Rail</i>	2" x 4" (1 1/2" x 3 1/2")	8' 12'	
<i>Post</i>	4" x 4" (3 1/2" x 3 1/2")	8' 12'	
<i>Spindle</i>	2" x 2" (1 1/2" x 1 1/2")	12'	
<i>Fascia</i>	3/4" x 12" (1/2" x 11 1/2")	12' 16'	 (not to scale)



### Your EnduraBoard Dealer:

1. For a copy of the Lifetime Warranty, please visit [www.enduraboard.com](http://www.enduraboard.com)
2. Always follow EnduraBoard Installation Instructions. Use stainless steel reverse thread screws. Details at [www.enduraboard.com](http://www.enduraboard.com)
3. Due to the limitations of the printing process, colors shown may not be accurate.
4. EnduraBoard Composite Decking (5/4" x 6") manufactured by Crawford Industries, LLC has been evaluated by ICC-ES to be code compliant (ESR-1890).
5. High-Density Polyethylene Plastic.
6. Always check with your local building codes for decking and railing installation guidelines.



Manufactured by:  
**Crawford Industries, LLC**  
33477 Industrial Drive  
Wauzeka, WI 53826



To learn more about EnduraBoard Decking or to find a dealer in your area, please visit our website at [www.enduraboard.com](http://www.enduraboard.com) or call 866-862-2154







## The Preferred Choice



It's no wonder EnduraBoard is becoming the preferred composite choice for many contractors. No one likes a long list of instructions or material that is hard on their equipment.



EnduraBoard not only is easy on equipment, but can be used with standard wood tools. You name it; saws, drills, even nail guns make EnduraBoard an excellent choice from the casual user to the professional home builder.



## “Build It Once... Built For Life”

Not all composite lumber is the same. Knowledge of the material makeup is the most important factor in distinguishing between different composite decks. The vast majority of composite decks are filled with wood flour and plastic. EnduraBoard is comprised of a natural mineral and a high grade HDPE. <sup>5</sup>

Why mineral? Unlike wood composites, EnduraBoard is non-organic and can't absorb moisture. EnduraBoard is 100% moisture resistant...



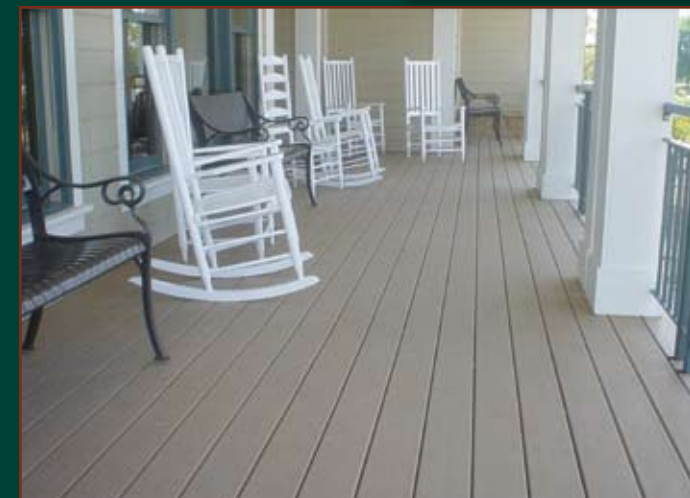
Chances are, if you can use it with green treated lumber, you can use it with EnduraBoard. This includes hidden fasteners or deck clips, which are ideal when visible screw holes are not desired. Remember to always use stainless steel fasteners. <sup>2</sup>

EnduraBoard was designed to be used like traditional wood without the problems seen by many wood composites, meaning superior durability, strength and low maintenance.



...No wood composite can claim that. When a wood composite deck absorbs moisture, it has the potential to behave like wood, leading to serious problems like, cracking, fading, rotting, warping and loss of strength.

Color loss is one of the major down falls of many composites. Don't be fooled by catchy slogans like, “It will naturally fade to it's own unique color.” Weathering over time can leave you with a gray board. The advantage is clear, EnduraBoard is guaranteed to keep its color for the life of your deck.



## Lifetime Warranty

A product is only as good as the warranty behind it. At EnduraBoard, we use natural minerals in place of wood by-products, making our decks last longer than many in the industry. Every board is backed by a Lifetime Warranty against: fading, rot, warping, splitting, fresh water or salt water damage, fungal decay, termites or marine borer. You will never have to worry about staining, cracking, or warping ever again. <sup>1</sup>

